

No. DE INVENTARIO 5801

FECHA DE INGRESO 13-03-2002

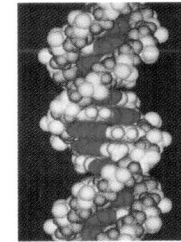
No. DE FACTURA 12724577

PROVEEDOR Sigma-Aldrich Química
Sol.: Dr. Hugh Harries.
No. Sol.: RN0021.

Outline

| | | | |
|-----------------------------|------------|--|------------|
| <hr/> | | 16 Retroviruses and retroposons | 485 |
| Part 1 Genes | 1 | 17 Rearrangement of DNA | 507 |
| 1 Genes are DNA | 3 | <hr/> | |
| 2 From genes to genomes | 37 | Part 5 The nucleus | 543 |
| 3 How many genes are there? | 67 | 18 Chromosomes | 545 |
| 4 Clusters and repeats | 89 | 19 Nucleosomes | 567 |
| <hr/> | | 20 Initiation of transcription | 617 |
| Part 2 Proteins | 117 | 21 Regulation of transcription | 649 |
| 5 Messenger DNA | 119 | 22 Nuclear splicing | 685 |
| 6 Protein synthesis | 139 | 23 Catalytic RNA | 719 |
| 7 Using the genetic code | 167 | 24 Immune diversity | 741 |
| 8 Protein localization | 191 | <hr/> | |
| <hr/> | | Part 6 Cells | 773 |
| Part 3 mRNA | 231 | 25 Protein trafficking | 775 |
| 9 Transcription | 232 | 26 Signal transduction | 801 |
| 10 The operon | 273 | 27 Cell cycle and growth regulation | 835 |
| 11 Phage strategies | 319 | 28 Oncogenes and cancer | 875 |
| <hr/> | | 29 Gradients, cascades, and signaling pathways | 913 |
| Part 4 DNA | 347 | <hr/> | |
| 12 The replicon | 349 | Glossary | 953 |
| 13 DNA replication | 385 | <hr/> | |
| 14 Recombination and repair | 415 | Index | 973 |
| 15 Transposons | 457 | | |

Contents



Part 1 Genes 1

1 Genes are DNA 3

| | |
|---|----|
| DNA is the genetic material | 4 |
| DNA is a double helix | 6 |
| DNA replication is semiconservative | 9 |
| Nucleic acids hybridize by base pairing | 12 |
| Mutations change the sequence of DNA | 14 |
| Mutations are concentrated at hotspots | 17 |
| A cistron is a single stretch of DNA | 19 |
| The nature of multiple alleles | 21 |
| Recombination occurs by physical exchange of DNA | 23 |
| The genetic code is triplet | 25 |
| Bacterial genes and proteins are colinear | 27 |
| <i>cis</i> -acting sites and <i>trans</i> -acting molecules | 30 |
| Genetic information can be provided by DNA or RNA | 31 |

2 From genes to genomes 37

| | |
|--|----|
| Genes can be mapped by restriction cleavage | 38 |
| How variable are individual genomes? | 41 |
| Eukaryotic genes are often interrupted | 44 |
| Organization of interrupted genes may be conserved | 46 |
| Exon sequences are conserved but introns vary | 48 |
| Genes can be isolated by the conservation of exons | 49 |
| Genes show a wide distribution of sizes | 53 |
| Some DNA sequences code for more than one protein | 55 |
| How did interrupted genes evolve? | 58 |
| The scope of the paradigm | 63 |

3 How many genes are there? 67

| | |
|---|----|
| Why are genomes so large? | 68 |
| Eukaryotic genomes have several sequence components | 69 |
| Most structural genes lie in nonrepetitive DNA | 73 |

| | |
|--|----|
| Total gene number is known for several organisms | 75 |
| How many genes are essential? | 76 |
| How many genes are expressed? | 78 |
| Organelles have DNA | 80 |
| Organelle genomes are circular DNAs that code for organelle proteins | 82 |
| Mitochondrial DNA codes for few proteins | 83 |
| The chloroplast genome codes for ~100 proteins and RNAs | 84 |

4 Clusters and repeats 89

| | |
|---|-----|
| Gene clusters are formed by duplication and divergence | 90 |
| Sequence divergence is the basis for the evolutionary clock | 92 |
| Pseudogenes are dead ends of evolution | 95 |
| Unequal crossing-over rearranges gene clusters | 97 |
| Genes for rRNA form a repeated tandem unit | 100 |
| Crossover fixation could maintain identical repeats | 103 |
| Satellite DNAs often lie in heterochromatin | 106 |
| Arthropod satellites have very short identical repeats | 108 |
| Mammalian satellites consist of hierarchical repeats | 108 |
| Minisatellites are useful for genetic mapping | 113 |

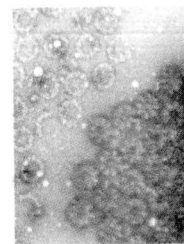
Part 2 Proteins 117

5 Messenger RNA 119

| | |
|--|-----|
| Transfer RNA is the adapter | 120 |
| Messenger RNA is translated by ribosomes | 124 |
| The life cycle of messenger RNA | 126 |
| Translation of eukaryotic mRNA | 129 |
| The 5' end of eukaryotic mRNA is capped | 130 |
| The 3' terminus is polyadenylated | 131 |
| Degradation pathways for mRNA | 133 |

6 Protein synthesis 139

| | |
|---|-----|
| The stages of protein synthesis | 140 |
| Initiation in bacteria needs 30S subunits and accessory factors | 143 |
| A special initiator tRNA starts the polypeptide chain | 144 |
| Initiation involves base pairing between mRNA and rRNA | 147 |
| Small subunits scan for initiation sites on eukaryotic mRNA | 149 |
| Elongation factor T loads aminoacyl-tRNA into the A site | 152 |
| Translocation moves the ribosome | 154 |
| Three codons terminate protein synthesis | 157 |
| Ribosomes have several active centers | 159 |



| | |
|--|-----|
| The role of ribosomal RNA in protein synthesis | 162 |
|--|-----|

7 Using the genetic code 167

| | |
|--|-----|
| Codon-anticodon recognition involves wobbling | 169 |
| tRNA contains modified bases that influence its pairing properties | 170 |
| The genetic code is altered in mitochondria | 174 |
| tRNAs are charged with amino acids by individual synthetases | 176 |
| Accuracy depends on proofreading | 179 |
| Suppressor tRNAs have mutated anticodons that read new codons | 182 |
| The accuracy of translation | 185 |
| tRNA may influence the reading frame | 187 |

8 Protein localization 191

| | |
|---|-----|
| Chaperones may be required for protein folding | 194 |
| Post-translational membrane insertion depends on leader sequences | 198 |
| A hierarchy of sequences determines location within organelles | 201 |
| The translocation apparatus interacts with signal sequences | 203 |
| How do proteins enter and leave membranes? | 208 |
| Anchor signals are needed for membrane residence | 212 |
| Bacteria use both co-translational and post-translational translocation | 215 |
| Pores control nuclear ingress and egress | 216 |
| Protein degradation by proteasomes | 224 |

Part 3 mRNA 231

9 Transcription 232

| | |
|---|-----|
| Transcription is catalyzed by RNA polymerase | 234 |
| RNA polymerase consists of multiple subunits | 238 |
| Sigma factor controls binding to DNA | 240 |
| Promoter recognition depends on consensus sequences | 244 |
| RNA polymerase binds to one face of DNA | 247 |
| Substitution of sigma factors may control initiation | 250 |
| Sigma factors may be organized into cascades | 253 |
| Bacterial RNA polymerase has two modes of termination | 257 |
| How does rho factor work? | 259 |
| Antitermination depends on specific sites | 262 |
| More subunits for RNA polymerase | 267 |

10 The operon 273

| | |
|--|-----|
| Structural gene clusters are coordinately controlled | 275 |
| Repressor is controlled by a small molecule inducer | 277 |



Naiy
Novel

Carlos

Etc
Caga

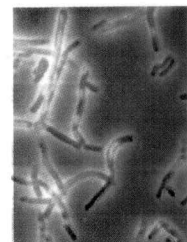
929

995-1002

| | |
|--|-----|
| Mutations identify the operator and the regulator gene | 280 |
| Repressor protein binds to the operator and is released by inducer | 283 |
| The specificity of protein-DNA interactions | 288 |
| Repression can occur at multiple loci | 291 |
| Distinguishing positive and negative control | 292 |
| Catabolite repression involves positive regulation at the promoter | 294 |
| Adverse growth conditions provoke the stringent response | 298 |
| Autogenous control may occur at translation | 301 |
| Alternative secondary structures control attenuation | 306 |
| Small RNA molecules can regulate translation | 312 |

11 Phage strategies 319

| | |
|---|-----|
| Lytic development is controlled by a cascade | 321 |
| Functional clustering in phages T7 and T4 | 324 |
| The lambda lytic cascade relies on antitermination | 325 |
| Lysogeny is maintained by an autogenous circuit | 330 |
| The DNA-binding form of repressor is a dimer | 333 |
| Repressor binds cooperatively at each operator using a helix-turn-helix motif | 334 |
| How is repressor synthesis established? | 339 |
| A second repressor is needed for lytic infection | 342 |
| A delicate balance: lysogeny versus lysis | 344 |



Part 4 DNA 347

12 The replicon 349

| | |
|---|-----|
| Origins can be mapped by autoradiography and electrophoresis | 350 |
| The bacterial genome is a single circular replicon | 354 |
| Each eukaryotic chromosome contains many replicons | 355 |
| Isolating the origins of yeast replicons | 357 |
| D loops maintain mitochondrial origins | 358 |
| The problem of linear replicons | 361 |
| Rolling circles produce multimers of a replicon | 363 |
| Single-stranded genomes are generated for bacterial conjugation | 366 |
| Connecting bacterial replication to the cell cycle | 370 |
| Cell division and chromosome segregation | 371 |
| Multiple systems ensure plasmid survival in bacterial populations | 376 |
| Plasmid incompatibility is connected with copy number | 378 |

13 DNA replication 385

| | |
|--|-----|
| DNA polymerases: the enzymes that make DNA | 386 |
| DNA synthesis is semidiscontinuous and primed by RNA | 390 |

| | |
|---|-----|
| Coordinating synthesis of the lagging and leading strands | 393 |
| The replication apparatus of phage T4 | 401 |
| Creating the replication forks at an origin | 402 |
| Common events in priming replication at the origin | 405 |
| Does methylation at the origin regulate initiation? | 406 |
| Licensing factor controls eukaryotic rereplication | 408 |

14 Recombination and repair 415

| | |
|---|-----|
| Breakage and reunion involves heteroduplex DNA | 418 |
| Double-strand breaks initiate recombination | 420 |
| Double-strand breaks initiate synapsis | 422 |
| Bacterial recombination involves single-strand assimilation | 426 |
| Gene conversion accounts for interallelic recombination | 431 |
| Topological manipulation of DNA | 432 |
| Specialized recombination involves breakage and reunion at specific sites | 437 |
| Repair systems correct damage to DNA | 441 |
| Excision repair systems in <i>E. coli</i> | 444 |
| Controlling the direction of mismatch repair | 446 |
| Retrieval systems in <i>E. coli</i> | 449 |
| RecA triggers the SOS system | 450 |
| Eukaryotic repair systems | 452 |

15 Transposons 457

| | |
|--|-----|
| Insertion sequences are simple transposition modules | 458 |
| Composite transposons have IS modules | 460 |
| Transposition occurs by both replicative and nonreplicative mechanisms | 462 |
| Common intermediates for transposition | 465 |
| Replicative transposition proceeds through a cointegrate | 467 |
| Nonreplicative transposition proceeds by breakage and reunion | 469 |
| TnA transposition requires transposase and resolvase | 470 |
| Transposition of Tn10 has multiple controls | 472 |
| Controlling elements in maize cause breakage and rearrangements | 473 |
| Controlling elements in maize form families of transposons | 476 |
| <i>Spm</i> elements influence gene expression | 478 |
| The role of transposable elements in hybrid dysgenesis | 479 |

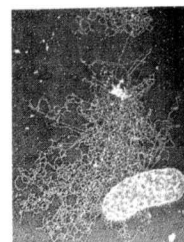
16 Retroviruses and retroposons 485

| | |
|--|-----|
| The retrovirus life cycle involves transposition-like events | 486 |
| Retroviruses may transduce cellular sequences | 494 |
| Yeast Ty elements resemble retroviruses | 496 |
| Many transposable elements reside in <i>D. melanogaster</i> | 499 |
| Retroposons fall into two classes | 500 |

| | |
|--|------------|
| 17 Rearrangement of DNA | 507 |
| The mating pathway is triggered by signal transduction | 508 |
| Yeast can switch silent and active loci for mating type | 511 |
| Silent cassettes at <i>HML</i> and <i>HMR</i> are repressed | 515 |
| Unidirectional transposition is initiated by the recipient <i>MAT</i> locus | 516 |
| Regulation of <i>HO</i> expression | 518 |
| Trypanosomes rearrange DNA to express new surface antigens | 519 |
| Interaction of Ti plasmid DNA with the plant genome | 524 |
| Selection of amplified genomic sequences | 530 |
| Exogenous sequences can be introduced into cells and animals by transfection | 533 |

Part 5 The Nucleus 543

| | |
|---|------------|
| 18 Chromosomes | 545 |
| Condensing viral genomes into their coats | 546 |
| The bacterial genome is a nucleoid with many supercoiled loops | 549 |
| Loops, domains, and scaffolds in eukaryotic DNA | 551 |
| The contrast between interphase chromatin and mitotic chromosomes | 553 |
| The extended state of lampbrush chromosomes | 556 |
| Transcription disrupts the structure of polytene chromosomes | 557 |
| The eukaryotic chromosome as a segregation device | 559 |
| Telomeres seal the ends of chromosomes | 562 |
| 19 Nucleosomes | 567 |
| The nucleosome is the subunit of all chromatin | 568 |
| DNA is coiled in arrays of nucleosomes | 571 |
| DNA structure varies on the nucleosomal surface | 574 |
| Supercoiling and the periodicity of DNA | 576 |
| The path of nucleosomes in the chromatin fiber | 578 |
| Organization of the histone octamer | 580 |
| Reproduction of chromatin requires assembly of nucleosomes | 583 |
| Do nucleosomes lie at specific positions? | 586 |
| Are transcribed genes organized in nucleosomes? | 589 |
| DNAase hypersensitive sites change chromatin structure | 593 |
| Domains define regions that contain active genes | 595 |
| Heterochromatin depends on interactions with histones | 597 |
| Global changes in X chromosomes | 601 |
| Methylation is responsible for imprinting | 603 |
| Modes of epigenetic inheritance | 606 |



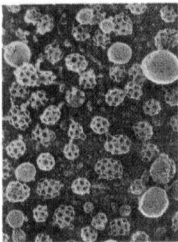
| | |
|---|------------|
| 20 Initiation of transcription | 617 |
| Eukaryotic RNA polymerases consist of many subunits | 619 |
| Promoter elements are defined by mutations and footprinting | 620 |
| RNA polymerase I has a bipartite promoter | 622 |
| RNA polymerase III uses both downstream and upstream promoters | 624 |
| The basal apparatus consists of RNA polymerase II and general factors | 627 |
| A connection between transcription and repair | 632 |
| Promoters for RNA polymerase II have short sequence elements | 634 |
| Enhancers contain bidirectional elements that assist initiation | 637 |
| Independent domains bind DNA and activate transcription | 641 |
| Interaction of upstream factors with the basal apparatus | 644 |

| | |
|---|------------|
| 21 Regulation of transcription | 649 |
| Response elements identify genes under common regulation | 650 |
| There are many types of DNA-binding domains | 652 |
| A zinc finger motif is a DNA-binding domain | 654 |
| Steroid receptors have several independent domains | 656 |
| Homeodomains bind related targets in DNA | 660 |
| Helix-loop-helix proteins interact by combinatorial association | 662 |
| Leucine zippers are involved in dimer formation | 664 |
| Chromatin remodeling is an active process | 666 |
| Histone acetylation and deacetylation control chromatin activity | 669 |
| Polycomb and trithorax are antagonistic repressors and activators | 672 |
| Long range regulation and insulation of domains | 674 |
| Gene expression is associated with demethylation | 678 |

| | |
|--|------------|
| 22 Nuclear splicing | 685 |
| Nuclear splice junctions are interchangeable but are read in pairs | 687 |
| Nuclear splicing proceeds through a lariat | 690 |
| The spliceosome contains snRNAs | 692 |
| Group II introns autosplice via lariat formation | 699 |
| Alternative splicing involves differential use of splice junctions | 702 |
| <i>cis</i> -splicing and <i>trans</i> -splicing reactions | 705 |
| Yeast tRNA splicing involves cutting and rejoining | 707 |
| 3' ends are generated by termination and by cleavage reactions | 711 |

| | |
|--|------------|
| 23 Catalytic RNA | 719 |
| Group I introns undertake self-splicing by transesterification | 720 |
| Group I introns form a characteristic secondary structure | 723 |
| Ribozymes have various catalytic activities | 725 |
| Some introns code for proteins that sponsor mobility | 728 |
| RNA can have ribonuclease activities | 731 |

| | |
|--|------------|
| RNA editing utilizes information from several sources | 733 |
| 24 Immune diversity | 741 |
| Clonal selection amplifies lymphocytes that respond to individual antigens | 743 |
| Immunoglobulin genes are assembled from their parts in lymphocytes | 745 |
| The diversity of germline information | 750 |
| Recombination between V and C gene segments generates deletions and rearrangements | 752 |
| Allelic exclusion is triggered by productive rearrangement | 757 |
| DNA recombination causes class switching | 758 |
| Early heavy chain expression can be changed by RNA processing | 760 |
| Somatic mutation generates additional diversity | 761 |
| B cell development and memory | 762 |
| T-cell receptors are related to immunoglobulins | 764 |
| The major histocompatibility locus codes for many genes of the immune system | 768 |
| Part 6 Cells | 773 |
| 25 Protein trafficking | 775 |
| Oligosaccharides are added to proteins in the ER and Golgi | 778 |
| Coated vesicles transport both exported and imported proteins | 781 |
| Budding and fusion reactions | 786 |
| Protein localization depends on further signals | 791 |
| Receptors recycle via endocytosis | 794 |
| 26 Signal transduction | 801 |
| Carriers and channels form water-soluble paths through the membrane | 804 |
| G proteins may activate or inhibit target proteins | 809 |
| Protein tyrosine kinases induce phosphorylation cascades | 811 |
| The Ras/MAPK pathway | 816 |
| Activating MAP kinase pathways | 822 |
| Cyclic AMP and activation of CREB | 827 |
| The JAK-STAT pathway | 828 |
| TGFb signals through Smads | 830 |
| 27 Cell cycle and growth regulation | 835 |
| Cycle progression depends on discrete control points | 836 |
| M phase kinase regulates entry into mitosis | 840 |
| Protein phosphorylation and dephosphorylation control the cell cycle | 843 |
| Cdc2 is the key regulator in yeasts | 844 |
| CDC28 acts at both START and mitosis in <i>S. cerevisiae</i> | 852 |
| The animal cell cycle is controlled by many cdk-cyclin complexes | 855 |



| | |
|---|------------|
| G0/G1 and G1/S transitions involve cdk inhibitors | 858 |
| Protein degradation is important in mitosis | 861 |
| Reorganization of the cell at mitosis | 864 |
| Apoptosis | 866 |
| 28 Oncogenes and cancer | 875 |
| Transforming viruses carry oncogenes | 878 |
| Retroviral oncogenes have cellular counterparts | 881 |
| Ras proto-oncogenes can be activated by mutation | 883 |
| Insertion, translocation, or amplification may activate proto-oncogenes | 886 |
| Oncogenes code for components of signal transduction cascades | 890 |
| Growth factor receptor kinases and cytoplasmic tyrosine kinases | 892 |
| Oncoproteins may regulate gene expression | 896 |
| RB is a tumor suppressor that controls the cell cycle | 899 |
| Tumor suppressor p53 suppresses growth or triggers apoptosis | 901 |
| Immortalization and transformation | 906 |
| 29 Gradients, cascades, and signaling pathways | 913 |
| Fly development uses a cascade of transcription factors | 914 |
| A gradient must be converted into discrete compartments | 915 |
| Maternal gene products establish gradients in early embryogenesis | 917 |
| Anterior-posterior development uses localized gene regulators | 920 |
| Dorsal-ventral development uses localized receptor-ligand interactions | 923 |
| TGFb/BMPs are diffusible morphogens | 929 |
| Cell fate is determined by compartments that form by the blastoderm stage | 931 |
| The wingless/wnt signaling pathway | 938 |
| Complex loci are extremely large and involved in regulation | 940 |
| The homeobox is a common coding motif in homeotic genes | 946 |
| Glossary | 953 |
| Index | 973 |